

LETTER

# Quantitative maps of groundwater resources in Africa

To cite this article: A M MacDonald *et al* 2012 *Environ. Res. Lett.* **7** 024009

View the [article online](#) for updates and enhancements.

## Related content

- [Limits to the availability of groundwater in Africa](#)  
W Mike Edmunds
- [Assessment of transboundary aquifers of the world—vulnerability arising from human water use](#)  
Yoshihide Wada and Lena Heinrich
- [Very low frequency electromagnetic \(VLF-EM\) and electrical resistivity \(ER\) investigation for groundwater potential evaluation in a complex geological terrain around the Ijebu-Ode transition zone, southwestern Nigeria](#)  
Olawale O Osinowo and A Idowu Olayinka

## Recent citations

- [Water quality assessment in the Bétaré-Oya gold mining area \(East-Cameroon\): Multivariate Statistical Analysis approach](#)  
Felaniaina Rakotondrabe *et al*
- [Seasonal Migration and Settlement around Lake Chad: Strategies for Control of Resources in an Increasingly Drying Lake](#)  
Felix Watang Zieba *et al*
- [Factors influencing water system functionality in Nigeria and Tanzania: a regression and Bayesian network analysis](#)  
Ryan David Cronk and Jamie Bartram

# Quantitative maps of groundwater resources in Africa

A M MacDonald<sup>1</sup>, H C Bonsor<sup>1</sup>, B É Ó Dochartaigh<sup>1</sup> and R G Taylor<sup>2</sup>

<sup>1</sup> British Geological Survey, West Mains Road, Edinburgh EH9 3LA, UK

<sup>2</sup> Department of Geography, University College London, Gower Street, London WC1E 6BT, UK

E-mail: [amm@bgs.ac.uk](mailto:amm@bgs.ac.uk)

Received 7 February 2012

Accepted for publication 19 March 2012


Published 19 April 2012

Online at [stacks.iop.org/ERL/7/024009](http://stacks.iop.org/ERL/7/024009)

## Abstract

In Africa, groundwater is the major source of drinking water and its use for irrigation is forecast to increase substantially to combat growing food insecurity. Despite this, there is little quantitative information on groundwater resources in Africa, and groundwater storage is consequently omitted from assessments of freshwater availability. Here we present the first quantitative continent-wide maps of aquifer storage and potential borehole yields in Africa based on an extensive review of available maps, publications and data. We estimate total groundwater storage in Africa to be 0.66 million km<sup>3</sup> (0.36–1.75 million km<sup>3</sup>). Not all of this groundwater storage is available for abstraction, but the estimated volume is more than 100 times estimates of annual renewable freshwater resources on Africa. Groundwater resources are unevenly distributed: the largest groundwater volumes are found in the large sedimentary aquifers in the North African countries Libya, Algeria, Egypt and Sudan. Nevertheless, for many African countries appropriately sited and constructed boreholes can support handpump abstraction (yields of 0.1–0.3 l s<sup>-1</sup>), and contain sufficient storage to sustain abstraction through inter-annual variations in recharge. The maps show further that the potential for higher yielding boreholes (>5 l s<sup>-1</sup>) is much more limited. Therefore, strategies for increasing irrigation or supplying water to rapidly urbanizing cities that are predicated on the widespread drilling of high yielding boreholes are likely to be unsuccessful. As groundwater is the largest and most widely distributed store of freshwater in Africa, the quantitative maps are intended to lead to more realistic assessments of water security and water stress, and to promote a more quantitative approach to mapping of groundwater resources at national and regional level.

**Keywords:** groundwater, Africa, climate change, water resources

 Online supplementary data available from [stacks.iop.org/ERL/7/024009/mmedia](http://stacks.iop.org/ERL/7/024009/mmedia)

## 1. Introduction

Water use in Africa is set to increase markedly over the next few decades as a result of population growth and planned increases in irrigation (Vörösmarty *et al* 2005). Currently, there are more than 300 million people in Africa without access to safe drinking water (JMP 2010), many of whom are amongst the poorest and most vulnerable in the world (Hunter *et al* 2010). Consequently, increasing access to improved water supplies is an international priority (Bartram and Cairncross 2010). Even for those with access to improved

water sources, there is growing evidence that domestic water use will need to increase substantially to help move people out of poverty (Grey and Sadoff 2007, Hunter *et al* 2010). There are also concerns about per capita food production in Africa (Funk and Brown 2009) that are likely to be exacerbated by climate change. Currently only 5% of the arable land is irrigated (Siebert *et al* 2010) and there is much discussion about increasing irrigation to help meet rising demands for food production in the context of less reliable rainfall (UNEP 2010, Pfister *et al* 2011).

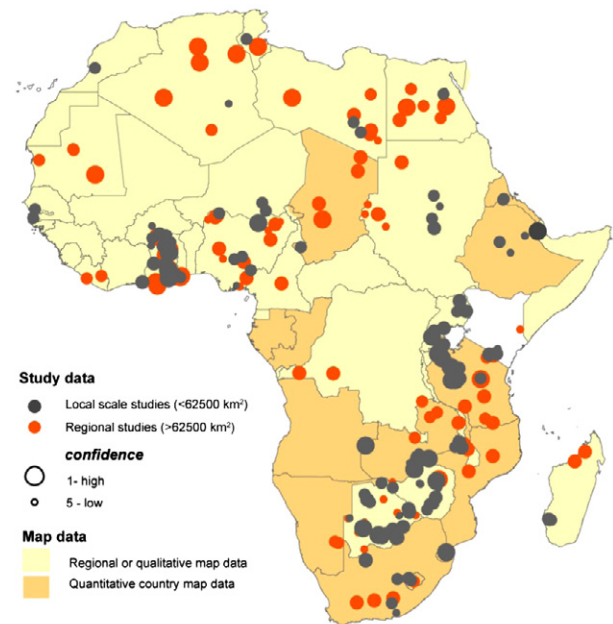
Increasing reliable water supplies throughout Africa will depend on the development of groundwater (Giordano 2009, MacDonald and Calow 2009). Groundwater responds much more slowly to meteorological conditions than surface water and, as such, provides a natural buffer against climate variability, including drought (Calow *et al* 1997, 2010). Groundwater generally does not require treatment since it is naturally protected from pathogenic contamination, although in some environments elevated iron, fluoride or arsenic concentrations can be a problem (Smedley 1996, Edmunds and Smedley 2005). Groundwater can also be found in most environments using the appropriate exploration techniques so supplies can be located close to the point of need, minimizing the requirement for extensive reticulation systems (MacDonald and Calow 2009).

Groundwater, however, is neither a universal panacea to water problems nor invulnerable to degradation. Careful characterization of the resource is required to guide investments in water supply and to manage the resource to minimize environmental degradation (Foster and Chilton 2003) and widespread depletion. Limited knowledge of African groundwater resources is evident from the paucity of information on groundwater included in the IPCC Fourth Assessment Report and Technical Paper on water (Bates *et al* 2008) which noted major uncertainty in how changes in climate may affect groundwater and what resources are currently available to help support adaptation strategies.

Quantitative, spatially explicit information on groundwater in Africa is required to characterize this resource in ways that can usefully inform strategies to adapt to growing water demand associated not only with population growth but also climate variability and change. Current continent-wide groundwater maps provide only qualitative information on the likely extent of aquifers (Struckmeier and Richts 2008, Seguin 2008, MacDonald and Calow 2009). As such, key quantitative information outlining the dimensions of the continent's groundwater resources have, to date, remained unresolved. We address this significant knowledge gap by developing the first quantitative maps of groundwater storage and potential groundwater yields in Africa.

## 2. Methods

Groundwater occurrence depends primarily on geology, geomorphology/weathering and effective rainfall (both current and historic). The interplay of these three factors gives rise to complex hydrogeological environments with innumerable variations in aquifer transmissivity (the permeability of the rocks integrated over thickness); effective porosity (the total porosity minus the volume taken up by water bound to clays or more rarely held in isolated unconnected pore spaces), saturated thickness of aquifers; and groundwater recharge. Direct measurements of transmissivity and effective porosity are scarce for much of Africa (Adelana and MacDonald 2008). Instead we use proxies for these parameters which have been found to be effective surrogates in data limited areas. For transmissivity, we use reported borehole yields (termed aquifer productivity). Although borehole yields are



**Figure 1.** Available information on groundwater resources for Africa used to construct the quantitative continent maps. A detailed list of the maps and studies is given in supplementary material 1 available at [stacks.iop.org/ERL/7/024009/mmedia](http://stacks.iop.org/ERL/7/024009/mmedia).

constrained by borehole and pump characteristics in addition to transmissivity, they are much more widely reported than measurements of transmissivity or alternatively, specific capacity. As such, use of borehole yields provides a much larger dataset with which to characterize spatial variations in aquifer productivity. In practice, boreholes are often constructed to maximize yield from an aquifer, which helps to explain why several studies have found borehole yields to be directly related to transmissivity at a regional or national scale (Acheampong and Hess 1998, Graham *et al* 2009). Effective porosity is estimated by systemizing the flow and storage characteristics of different lithologies and relating these to measured effective porosity in Africa and other global analogies. Saturated thickness is estimated from the available hydrogeological and geological reports and data (see below).

Fundamental to our analysis is the collation and review of existing national hydrogeological maps as well as both published and grey literature for Africa. Hydrogeological maps were collated by building on the International Association of Hydrogeologists database of published maps, WHYMAP (Struckmeier and Richts 2008) and supplementing these with other geological and hydrogeological maps available elsewhere. A systematic review of aquifer studies was also undertaken from published and easily accessible grey literature resulting in 283 aquifer summaries within 152 publications. A database of all maps and consulted studies, together with the review criteria, are given in supplementary material 2 available at [stacks.iop.org/ERL/7/024009/mmedia](http://stacks.iop.org/ERL/7/024009/mmedia). Figure 1 shows the spatial distribution of data used to develop the quantitative maps, and the range of confidence in the data assigned by systematic review.

The new quantitative maps of groundwater in Africa were developed in the following manner: (1) the digital 1:5 million scale geological map of Africa (Persits *et al* 1997) was modified by dividing Precambrian rocks into hydrogeologically significant units (meta-sedimentary, mobile-belt, craton), and classifying sedimentary rocks according to the major basins to which they belong; (2) published national and regional hydrogeological maps were georeferenced and used to further combine or divide geological units; (3) the modified geological basemap was parameterized using available quantitative information from the national hydrogeological maps and the georeferenced aquifer studies for aquifer productivity (the approximate interquartile range in the yield of appropriately sited boreholes); saturated aquifer thickness (the estimated range in total saturated thickness for the aquifer units) and aquifer flow/storage type (classified as fractured volcanic rocks, weathered and non-weathered crystalline basement, dominantly fractured, mixed intergranular/fractured and dominantly intergranular consolidated sedimentary rocks, and unconsolidated sediments); and (4) peer review of the draft quantitative maps by 12 regional experts.

To estimate groundwater storage the saturated aquifer thickness was multiplied by effective porosity ( $\phi_e$ ). For each of the aquifer flow/storage types an effective porosity ( $\phi_e$ ) range was assigned based on a series of studies across Africa and surrogates in other parts of the world. Weathered basement and fractured volcanic rocks were assigned a mean  $\phi_e$  of 5% (1–10%), which is representative of moderately decomposed crystalline basement (Taylor and Eggleton 2001, Petford 2003, Howard and Griffith 2009). Fractured sedimentary rocks were assigned a mean  $\phi_e$  of 8% (3–15%) based on studies in the Karoo basin (Van der Voort 2001); the Voltaian Sediments (Pelig-Ba 2009), and the Benue Trough (Lott 1998). Mixed intergranular and fractured rocks were assigned a mean  $\phi_e$  of 15% (10–30%) based on a studies in Nigeria (Samaila and Singh 2010), Botswana (Jones 2010), surrogates in the UK (Allen *et al* 1997) and global oil industry studies of porosity in cemented siliciclastic reservoirs (Morse 1994). Intergranular aquifers were assigned a mean  $\phi_e$  of 25% (20–35%), a conservative value based on the studies in the Continental Terminale (Adelana and MacDonald 2008), the Chad Basin (Nwankwo *et al* 2009) and the Nubian Sandstone (Beavan *et al* 1991).

Figure 1 shows the distribution of data used to develop the continental maps. Good quality hydrogeological maps and studies are available for much of southern Africa, but there is a lack of quantitative national hydrogeological maps in north, west and central Africa. In western Africa, this is compensated by the availability of many individual smaller studies, most notably in Nigeria and Ghana. In northern Africa, the size of individual studies tend to be much larger and involve characterizing major regional aquifers that substitute for the lack of high quality national maps. In central Africa both maps and literature are scarce.

### 3. Results and discussion

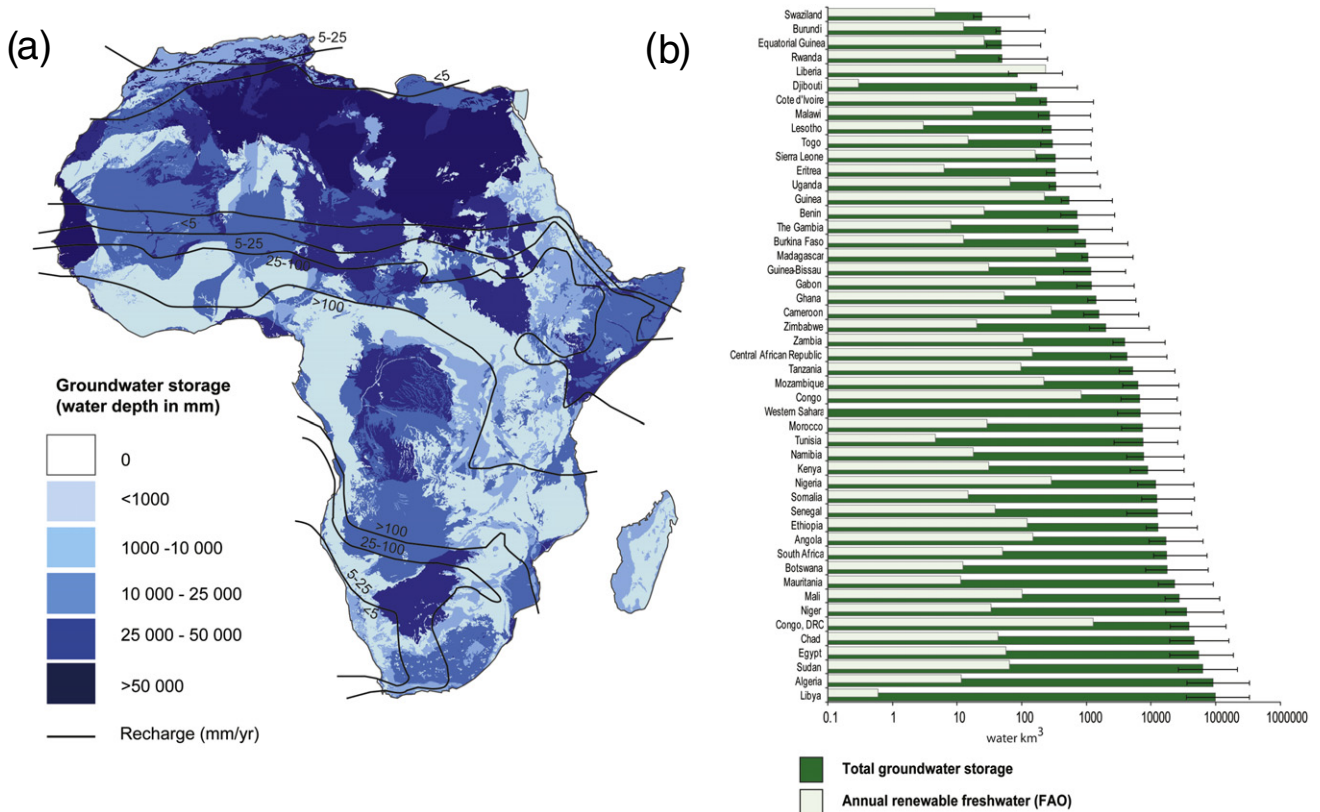
#### 3.1. Groundwater storage

Groundwater storage has been estimated by combining the saturated thickness and effective porosity of aquifers across Africa (figure 2). Large sedimentary aquifers in North Africa contain a considerable proportion of Africa's groundwater. Libya, Algeria, Sudan, Egypt and Chad have the largest groundwater reserves. Many of these Saharan aquifers are not, however, actively recharged, but were recharged more than 5000 yr ago when the climate of the area was wetter (Scanlon *et al* 2006, Edmunds 2008). Groundwater storage volumes in these aquifers can be as high as  $75 \times 10^6 \text{ m}^3 \text{ km}^{-2}$  (equivalent to 75 m water depth).

Aquifers with the least storage generally comprise thin weathered Precambrian basement rocks where average groundwater volumes are estimated to be  $0.5 \times 10^6 \text{ m}^3 \text{ km}^{-2}$  (equivalent to 0.5 m water depth) and range from 0.05 to  $2.5 \times 10^6 \text{ m}^3 \text{ km}^{-2}$ . The limited storage of these aquifers is nevertheless highly significant as it is considerably more than the volume abstracted annually using a community handpump ( $<0.003 \times 10^6 \text{ m}^3$ ). These aquifers also have sufficient storage space to allow groundwater recharge to be stored for several decades thereby providing a vital buffer against variable climates (MacDonald *et al* 2009). Countries with the lowest groundwater reserves are generally those with a small land area which are underlain almost exclusively by Precambrian basement rocks.

The total volume of groundwater in Africa is estimated to be 0.66 million  $\text{km}^3$  with a range in uncertainty of between 0.36 and 1.75 million  $\text{km}^3$  (figure 2 and table 1). Not all the groundwater volume estimated by the saturated thickness and effective porosity of the aquifer is, however, available to be abstracted. The volume of water that is released from an aquifer through pumping is often less than the effective porosity but is problematic to measure. This parameter, specific yield, represents the drainable porosity of an unconfined aquifer. There are only two published estimates of *in situ* specific yield at location in Africa (Wright *et al* 1982, Taylor *et al* 2010). Both indicate the specific yield to be approximately half of the measured porosity, consistent with global estimates (Fetter 2000).

Our estimates of groundwater storage do not consider water quality as there is currently insufficient data to make meaningful regional assessments for Africa. Concentrations of fluoride in excess of drinking water guidelines have been found in the volcanic rocks of the East African rift valley (Edmunds and Smedley 2005); elevated arsenic concentrations have been found locally in weathered basement rocks in West Africa (Smedley 1996). Undesirable natural concentrations of other parameters including iron, manganese and chloride can also be found in aquifers depending on local hydrogeological conditions. Contamination of groundwater by faecal coliforms and nitrate is common in urban areas from widespread and dispersed faecal effluent from on-site sanitation and leaking sewers (Adelana and MacDonald 2008).



**Figure 2.** Groundwater storage for Africa based on the effective porosity and saturated aquifer thickness. Panel (a) shows a map of groundwater storage expressed as water depth in millimetres with modern annual recharge for comparison (Döll and Fiedler 2008). Panel (b) shows the volume of groundwater storage for each country; the error bars are calculated by recalculating storage using the full ranges of effective porosity and thickness for each aquifer, rather than the best estimate. Annual renewable freshwater availability (FAO 2005) generally used in water scarcity assessments is shown for comparison.

Notwithstanding the uncertainties discussed above, the estimated groundwater storage (0.66 million km<sup>3</sup>) represents a water resource that is of a different magnitude to all other freshwater sources in Africa. Annual average rainfall is approximately 0.02 million km<sup>3</sup> (New *et al* 2000) and freshwater storage in lakes is estimated to be 0.03 million km<sup>3</sup> (Shiklomanov and Rodda 2003). Water scarcity assessments (e.g. Falkenmark 1989, Vörösmarty *et al* 2010) are based on renewable freshwater resources defined by river discharge and estimated groundwater recharge which amount to approximately 0.004 million km<sup>3</sup> (FAO 2005, UNEP 2010). Figure 2 illustrates that many countries designated as ‘water scarce’ have substantial groundwater reserves. These large reserves provide a large and important buffer to changes in climate, and are therefore integral to the development of adaptation strategies to current and future climatic variability.

### 3.2. Aquifer productivity

The accessibility of the groundwater resources is as important as overall groundwater storage in determining how far groundwater can support nations and communities to adapt to climate change and population growth (Calow *et al* 2010). Groundwater is accessed and abstracted, generally through drilling boreholes, and the yield of the borehole will limit the rate at which groundwater can be abstracted. For a community water supply fitted with a handpump, a borehole must be able

to sustain a supply of >0.1 l s<sup>-1</sup>, and preferably 0.3 l s<sup>-1</sup>. Intensive irrigated agriculture requires much higher borehole yields. For example a standard centre pivot irrigator of the type used in the central plains of the US will require a borehole that can supply approximately 50 l s<sup>-1</sup>. Other farm systems which irrigate smaller areas do not require such high yields, but for commercial irrigation schemes typically demand boreholes supplying >5 l s<sup>-1</sup>. In a similar way, urban town supplies rely on individual boreholes that can sustain a yield of at least 5 l s<sup>-1</sup>.

Figure 3 shows the calculated aquifer productivity map for Africa, indicating what boreholes yields can reasonably be expected in different hydrogeological units. The ranges indicate the approximate interquartile range of the yield of boreholes that have been sited and drilled using appropriate techniques, rather than those drilled at random. For most geological units, likely yields from successful boreholes span several orders of magnitude (figure 4). Crystalline basement rocks have the lowest yields, generally less than 0.5 l s<sup>-1</sup>, though a significant minority of areas have yields that are in excess of 1 l s<sup>-1</sup> (figure 4). Highest borehole yields (>20 l s<sup>-1</sup>) can be found in thick sedimentary aquifers, particularly in unconsolidated or poorly consolidated sediments. Depth to groundwater is another important factor controlling accessibility and cost of accessing groundwater (figure 3). Water levels deeper than 50 m will not be able to be accessed easily by a hand pump. At depths >100 m

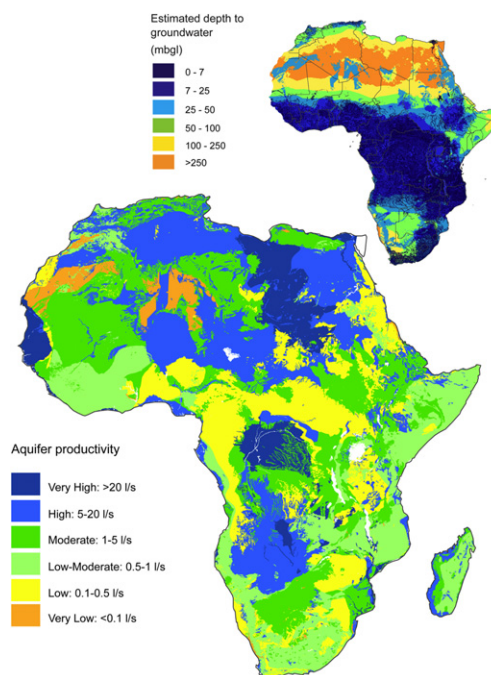
**Table 1.** Estimated groundwater storage for African countries.

Country	Groundwater storage (km <sup>3</sup> )	
	Best estimate	Range <sup>a</sup>
Algeria	91 900	56 000–243 000
Angola	17 100	7800–46 500
Benin	718	320–2000
Botswana	17 700	9560–58 300
Burkina Faso	978	319–3330
Burundi	47	8–183
Cameroon	1560	667–4810
C African Rep	4240	1 900–13 100
Chad	46 000	26 600–112 000
Congo	6730	3 350–18 300
Congo, DRC	38 300	18 600–103 000
Cote d'Ivoire	241	49–1020
Djibouti	171	35–546
Egypt	55 200	36 000–130 000
Equatorial Guinea	48	20–147
Eritrea	333	94–1120
Ethiopia	12 700	4340–39 300
Gabon	1200	499–4190
Ghana	1400	369–4418
Guinea	541	133–1935
Guinea-Bissau	1180	742–2824
Kenya	8840	4090–23 300
Lesotho	285	78–936
Liberia	86	25–333
Libya	99 500	64 600–234 000
Madagascar	1060	207–4160
Malawi	269	91–885
Mali	27 100	10 600–87 000
Mauritania	23 400	10 500–67 200
Morocco	7410	3970–20 700
Mozambique	6290	2684–20 300
Namibia	7720	3520–24 600
Niger	35 800	19 000–94 700
Nigeria	11 800	5710–33 600
Rwanda	49	6–198
Senegal	12 500	8280–29 100
Sierra Leone	327	160–850
Somalia	12 300	5210–34 500
South Africa	17 400	6400–56 100
Sudan	63 200	37 100–151 000
Swaziland	24	6–104
Tanzania	5250	2040–17 900
The Gambia	748	498–1750
Togo	297	102–879
Tunisia	7580	4 910–18 100
Uganda	339	73–1270
Western Sahara	6800	3770–21 400
Zambia	3950	1430–12 300
Zimbabwe	2010	906–7230

<sup>a</sup> The range is calculated by recalculating storage using the full ranges of effective porosity and thickness for each aquifer, rather than the best estimate.

the cost of borehole drilling increases significantly due to the requirement for more sophisticated drilling equipment.

The aquifer productivity map (figure 3) shows that for many African countries appropriately sited and constructed boreholes will be able to sustain community handpumps (yields of 0.1–0.3 l s<sup>-1</sup>) and for most of the populated areas of Africa, groundwater levels are likely to be sufficiently shallow to be accessed using a handpump. The majority of large groundwater stores in the sedimentary basins which can

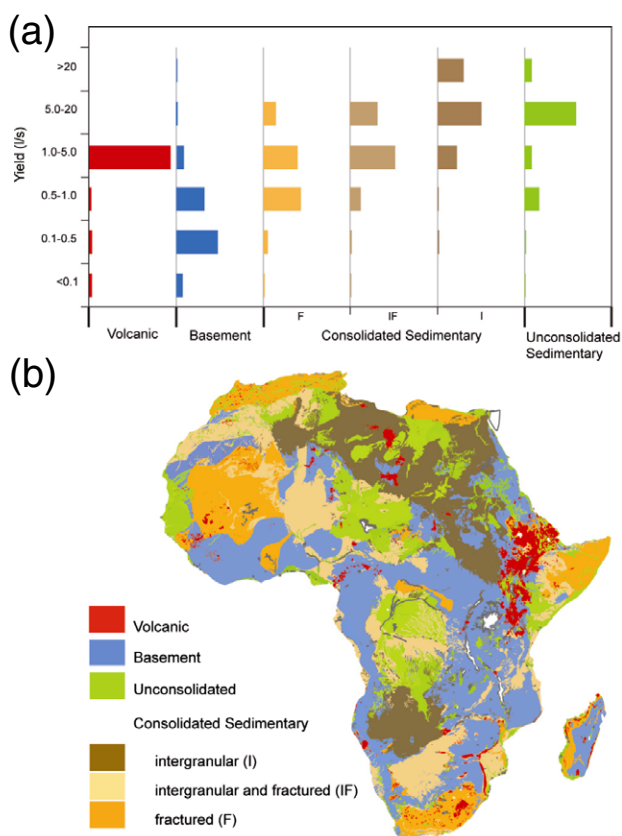


**Figure 3.** Aquifer productivity for Africa showing the likely interquartile range for boreholes drilled and sited using appropriate techniques and expertise. The inset shows an approximate depth to groundwater (Bonsor and MacDonald 2011).

accommodate high yielding boreholes are in northern Africa. These are often far from population centres and have deep water levels and are therefore costly to develop. Away from the large sedimentary aquifers in northern Africa, the potential for borehole yields exceeding 5 l s<sup>-1</sup> is not widespread, though higher yielding boreholes may be successful in some areas if accompanied by detailed hydrogeological investigation. The potential for intermediate boreholes yields of 0.5–5 l s<sup>-1</sup>, which could be suitable for small scale household and community irrigation, or multiple use water supply systems, is much higher, but will again require effective hydrogeological investigation and borehole siting. Strategies for increasing the use of groundwater throughout Africa for irrigation and urban water supplies should not be predicated upon the widespread expectation of high yielding boreholes but recognize that high borehole yields may occasionally be realized where a detailed knowledge of the local groundwater conditions has been developed.

#### 4. Conclusions

The production of the first quantitative maps of groundwater resources in Africa reveals the magnitude and distribution of freshwater stored as groundwater. The volume of groundwater is estimated to be 0.66 million km<sup>3</sup>, more than 100 times the annual renewable freshwater resources, and 20 times the freshwater stored in African lakes. As the largest and most widely distributed store of freshwater in Africa, groundwater provides an important buffer to climate variability and change. The maps presented here are designed to give a continent-wide view of groundwater and to encourage the development of more quantitative national and sub-national



**Figure 4.** The range in aquifer productivity within the different geological environments from the available data. The frequency in panel (a) is the proportion of land area within each geological unit attributed with a particular aquifer productivity class; panel (b) shows the distribution of each geological environment.

quantitative maps and assessments to support the development of groundwater-based adaptation strategies to current and future climate variability. In addition, the maps enable the explicit representation of groundwater storage in assessments of water scarcity and strategies to achieve water security.

The maps demonstrate the uneven distribution of groundwater across the continent and in particular the large groundwater volumes available in the sedimentary basins of north Africa. The potential for boreholes yielding greater than  $5 \text{ l s}^{-1}$  outside of large sedimentary basins is not widespread but limited to particular areas requiring careful exploration and development. Nevertheless, for many African countries appropriately sited and constructed boreholes will support a handpump (a yield of  $0.1\text{--}0.3 \text{ l s}^{-1}$ ), and sufficient storage is available to sustain abstraction through inter-annual variations in recharge.

### Acknowledgments

This paper is published with the permission of the Executive Director of the British Geological Survey (NERC). The research was funded by grants from the UK Department for International Development.

© BGS/NERC 2012

### References

Acheampong S Y and Hess J W 1998 Hydrogeologic and hydrochemical framework of the shallow groundwater system in the southern Voltaian sedimentary basin *Hydrogeol. J.* **6** 527–37

Adelana S M A and MacDonald A M (ed) 2008 *Applied Groundwater Studies in Africa (IAH Special Publications in Hydrogeology vol 13)* (Leiden: CRC Press/Balkema)

Allen D J, Brewerton L J, Coleby L M, Gibbs B R, Lewis M A, MacDonald A M, Wagstaff S J and Williams A T 1997 The physical properties of major aquifers in England and Wales *British Geological Survey Technical Report WD/97/034* (Keyworth: British Geological Survey)

Bartram J and Cairncross S 2010 Hygiene, sanitation, and water: forgotten foundations of health *PLoS Med.* **7** e1000367

Bates B C, Kundzewicz Z W, Wu S and Palutikof J P (ed) 2008 *Climate change and water Technical Paper of the Intergovernmental Panel on Climate Change* (Geneva: IPCC Secretariat)

Beavan J, Evans K, Mousa S and Simpson D 1991 Estimating aquifer parameters from analysis of forced fluctuations in well level: an example from the Nubian formation near Aswan, Egypt 2. Poroelastic properties *J. Geophys. Res.* **96** 12139–60

Bonsor H C and MacDonald A M 2011 An initial estimate of depth to groundwater across Africa *British Geological Survey Open Report OR/11/067* (Keyworth: British Geological Survey)

Calow R C, MacDonald A M, Nicol A L and Robins N S 2010 Ground water security and drought in Africa: linking availability, access and demand *Ground Water* **48** 246–56

Calow R C, Robins N S, MacDonald A M, Macdonald D M J, Gibbs B R, Orpen W R G, Mtembezeka P, Andrews A J and Appiah S O 1997 Groundwater management in drought prone areas of Africa *Int. J. Water Res. Dev.* **13** 241–61

Döll P and Fiedler K 2008 Global-scale modelling of groundwater recharge *Hydrol. Earth Syst. Sci.* **12** 863–85

Edmunds W M 2008 Groundwater in Africa—palaeowater, climate change and modern recharge *Applied Groundwater Studies in Africa (IAH Selected Papers on Hydrogeology vol 13)* ed S M A Adelana and A M MacDonald (Leiden: CRC Press/Balkema) pp 305–36

Edmunds W M and Smedley P L 2005 Fluoride in natural waters *Essentials of Medical Geology* ed B J Alloway and O Selinus (London: Elsevier) pp 301–29

Falkenmark M 1989 The massive water scarcity threatening Africa—why is not it being addressed? *Ambio* **18** 112–8

FAO 2005 *AQUASTAT Database* (Rome: Food and Agricultural Organisation of the United Nations)

Fetter C W 2000 *Applied Hydrogeology* 4th edn (Englewood Cliffs, NJ: Prentice-Hall)

Foster S S D and Chilton P J 2003 Groundwater: the processes and global significance of aquifer degradation *Phil. Trans. R. Soc. B* **258** 1957–72

Funk C C and Brown M E 2009 Declining global per capita agricultural production and warming oceans threaten food security *Food Secur.* **1** 271–89

Giordano M 2009 Global groundwater? Issues and solutions *Annu. Rev. Environ. Resour.* **34** 153–78

Graham M T, Ó Dochartaigh B É, Ball D F and MacDonald A M 2009 Using transmissivity, specific capacity and borehole yield data to assess the productivity of Scottish aquifers *Q. J. Eng. Geol. Hydrog.* **42** 227–35

Grey D and Sadoff C W 2007 Sink or swim? Water security for growth and development *Water Policy* **9** 545–71

Howard K W F and Griffith A 2009 Can the impacts of climate change on groundwater resources be studied without the use of transient models? *Hydrol. Sci. J.* **54** 754–64

Hunter P R, MacDonald A M and Carter R C 2010 Water supply and health *PLoS Med.* **7** e1000361

- JMP 2010 *Progress on Sanitation and Drinking Water, 2010 Update* (Geneva and New York: WHO/UNICEF)
- Jones M J 2010 *The Groundwater Hydrology of the Okavango Basin* (Rome: Food and Agricultural Organisation of the United Nations)
- Lott G K 1998 Thin section petrography of thirty-five samples from boreholes in the Cretaceous succession of the Benue Trough Nigeria *British Geological Survey Technical Report WH/98/174C* (Keyworth: British Geological Survey)
- MacDonald A M and Calow R C 2009 Developing groundwater for secure water supplies in Africa *Desalination* **248** 546–56
- MacDonald A M, Calow R C, Macdonald D M J, Darling W G and Ó Dochartaigh B É 2009 What impact will climate change have on rural water supplies in Africa? *Hydrol. Sci. J.* **54** 690–703
- Morse D G 1994 Siliclastic reservoir rocks *The Petroleum System—from Source Rock to Trap* (American Association of Petroleum Geologists Memoir vol 60) ed L B Magoon and W G Dow (Tulsa, OK: AAPG) pp 121–39
- New M, Hulme M and Jones P 2000 Representing twentieth-century space–time climate variability. Part II: development of 1901–96 monthly grids of terrestrial surface climate *J. Clim.* **13** 2217–38
- Nwankwo C N, Ekine A S and Nwosu L I 2009 Estimation of the heat flow variation in the Chad basin Nigeria *J. Appl. Sci. Environ. Manage.* **13** 73–80
- Pelig-Ba K B 2009 Analysis of stable isotope contents of surface and underground water in two main geological formations in the northern region of Ghana *W. Afr. J. Appl. Ecol.* **15** 65–72
- Persits F, Ahlbrandt T, Tuttle M, Charpentier R, Brownfield M and Takahashi K 1997 Maps showing geology, oil and gas fields and geological provinces of Africa *US Geol. Survey Open-File Report 97-470A*
- Petford N 2003 Controls on primary porosity and permeability development in igneous rocks *Hydrocarbons in Crystalline Rocks* (Geological Society London Special Publications vol 214) ed N Petford and K J W McCaffrey (London: Geological Society London) pp 93–107
- Pfister S, Bayer P, Koehler A and Hellweg S 2011 Projected water consumption in future global agriculture: scenarios and related impacts *Sci. Total Environ.* **409** 4206–16
- Samaila N K and Singh G P 2010 Study of porosity loss due to compaction in the cretaceous upper Bima sandstone, upper Benue trough, NE Nigeria *Earth Sci. India* **3** 105–14
- Scanlon B R, Keese K E, Flint A F, Flint L E, Gaye C B, Edmunds W M and Simmers I 2006 Lobal synthesis of groundwater recharge in semiarid and arid regions *Hydrol. Process.* **20** 3335–70
- Seguin J J 2008 *Carte Hydrogéologique de l’Afrique à l’échelle du 1/10M* (Orléans: Bureau de Recherches Géologiques et Minières (BGRM))
- Shiklomanov I and Rodda J (ed) 2003 *World Water Resources at the Beginning of the Twenty-first Century* (International Hydrology Series, UNESCO) (Cambridge: Cambridge University Press)
- Siebert S, Burke J, Faures J M, Frenken K, Hoogeveen J, Döll P and Portmann F T 2010 Groundwater use for irrigation—a global inventory *Hydrol. Earth Syst. Sci.* **14** 1863–80
- Smedley P L 1996 Arsenic in rural groundwater in Ghana *J. Afr. Earth Sci.* **22** 459–70
- Struckmeier W and Richts A 2008 Groundwater resources of the world 1: 25 000 000 (Hannover: World-wide Hydrogeological Mapping and Assessment Programme (WHYMAP))
- Taylor G and Eggleton R A 2001 *Regolith Geology and Geomorphology* (Chichester: Wiley)
- Taylor R G, Tindimugaya C, Barker J A, Macdonald D M J and Kulabako R 2010 Convergent radial tracing of viral and solute transport in gneiss saprolite *Ground Water* **48** 284–94
- UNEP 2010 *Africa Water Atlas* (Nairobi: Division of Early Warning and Assessment (DEWA), United Nations Environment Programme)
- Van der Voort I 2001 Risk based decision tool for managing and protecting groundwater resources *PhD Thesis* University of the Free State, Bloemfontein (unpublished)
- Vörösmarty C J, Douglas E M, Green P A and Revenga C 2005 Geospatial indicators of emerging water stress: an application to Africa *Ambio* **34** 230–6
- Vörösmarty C J *et al* 2010 Global threats to human water security and river biodiversity *Nature* **467** 555–61
- Wright E P, Benfield A C, Edmunds W M and Kitching R 1982 Hydrogeology of the Kufra and Sirte basins, eastern Libya *Q. J. Eng. Geol.* **15** 83–103