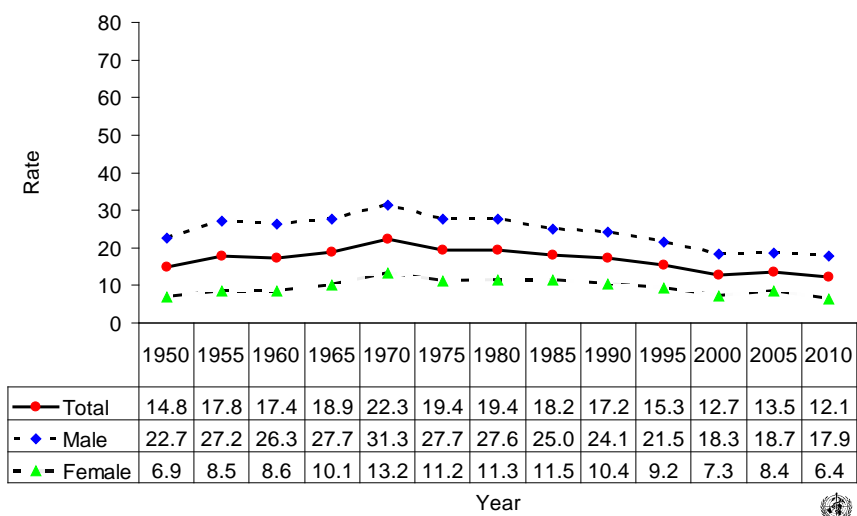
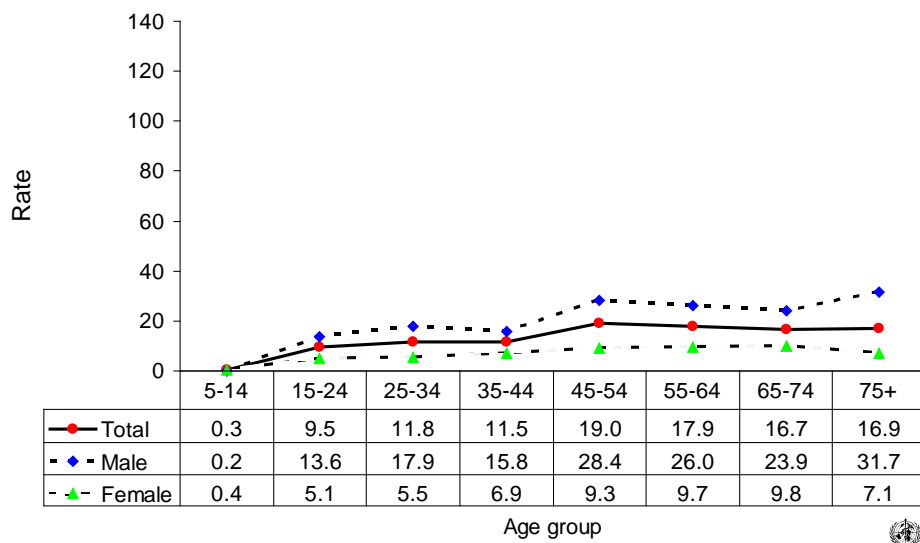


Suicide rates (per 100,000), by gender, Sweden, 1950-2010.



Suicide rates (per 100,000), by gender and age, Sweden, 2010.



Number of suicides by age group and gender. SWEDEN, 2010.

Age (years)	5-14	15-24	25-34	35-44	45-54	55-64	65-74	75+	All
Males	1	87	106	104	175	155	107	101	836
Females	2	31	31	44	56	58	46	34	302
Total	3	118	137	148	231	213	153	135	1138